



20
26

Marine Research Infrastructures

Marine Research Infrastructures

Providing a deeper understanding of the connection between Ireland, its coastal seas and the Atlantic



To discuss how the research infrastructures can support your research, please contact infrastructures@marine.ie

www.marine.ie

Follow us on 
[@MarineInst](https://twitter.com/MarineInst)
[@Eir_OOS](https://twitter.com/Eir_OOS)
[@ArgoIreland](https://twitter.com/ArgoIreland)
[@SmartBay_ie](https://twitter.com/SmartBay_ie)

The Marine Institute is a global leader in ocean knowledge, empowering Ireland and its people to safeguard and harness our ocean wealth.

The Marine Institute's Research Infrastructures Team manages and operates a multi-platform suite of research infrastructures that provide ocean and climate observation data to address key national and international scientific requirements and strategic objectives.

Supporting enhanced Irish participation in national, European and international marine research, these infrastructures are available to access by the wider marine research community.

Access to these facilities further develops Ireland's collective scientific and technical research capacity in ocean observations by providing a deeper understanding of the connection between Ireland, its coastal seas and the Atlantic.

Supported by

Department of Agriculture, Food and the Marine (DAFM)
Sustainable Energy Authority of Ireland (SEAI)
Taighde Éireann - Research Ireland
Met Éireann



An Roinn Talmhaíochta,
Bia agus Mara
Department of Agriculture,
Food and the Marine





The North Atlantic at dawn © Declan Horan

January **20**
26

National Equipment Pool

From acoustic releases to zooplankton nets, the National Equipment Pool contains an A-Z of sensors, instruments and specialised oceanographic equipment for marine research.

The equipment pool enhances access to specialist marine research equipment and facilities to develop cutting edge scientific and technical research capacity in ocean observations.

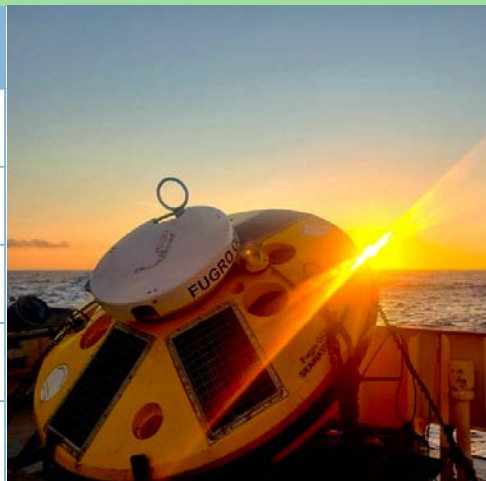
Enquiries are welcome from the marine research community to access the equipment pool with supporting specialist technical expertise also provided.

To discuss how the national equipment pool can support your research, please contact infrastructures@marine.ie | www.marine.ie

February

Photo © Declan Horan

M	T	W	T	F	S	S
26	27	28	29	30	31	1
2	3	4	5	6	7	8
9	10	11	12	13	14	15
16	17	18	19	20	21	22
23	24	25	26	27	28	1



M	T	W	T	F	S	S
29	30	31	1 New Year's Day	2	3	4
5	6	7	8	9	10	11
12	13	14	15	16	17	18
19	20	21	22	23	24	25
26	27	28	29	30	31	1



Sailbuoy for EU project GEORGE deployed from Cork © Siobhán Burke

**February 20
26**

Horizon Europe Projects

AMRIT – Shaping the future of marine infrastructures supporting the European Ocean Observing System by improving planning, operations, and data management.

ANERIS – Pioneering Operational Marine Biology to combat biodiversity loss with cutting-edge monitoring tools.

Digi4Eco – Harnessing digital innovation to advance environmental monitoring, marine ecosystem conservation, and socio-economic management.

GEORGE – Combining autonomous sensors and AI to measure marine CO₂ fluxes, improving predictions of ocean acidification.

For more information on these projects please contact infrastructures@marine.ie | www.marine.ie

March

Photo © Christine Loughlin

M	T	W	T	F	S	S
23	24	25	26	27	28	1
2	3	4	5	6	7	8
9	10	11	12	13	14	15
16	17	18	19	20	21	22
23	24	25	26	27	28	29
30	31	1	2	3	4	5



M	T	W	T	F	S	S
26	27	28	29	30	31	1
2	3	4	5	6	7	8
Public Holiday						
9	10	11	12	13	14	15
16	17	18	19	20	21	22
23	24	25	26	27	28	1





Sailing Galway Bay © David Brennan

March

**20
26**

Irish National Tide Gauge Network

Irish National Tide Gauge Network is a network of 20 tide gauge stations around the coast monitoring tidal levels. Two stations are high-precision Global Sea Level Observing System (GLOSS) standard for monitoring long term sea level rise.

Tidal measurements provide critical information for flood forecasting, coastal engineering, and supporting research, recreation, and navigation activities.

The network supplies freely available real-time data at 5 minute intervals to forecasters, mariners, and the general public.

To discuss how the tide gauge network can support your research, please contact infrastructures@marine.ie | www.marine.ie

April

Photo © Guy Westbrook

M	T	W	T	F	S	S
30	31	1	2	3	4	5
6	7	8	9	10	11	12
13	14	15	16	17	18	19
20	21	22	23	24	25	26
27	28	29	30	1	2	3



M	T	W	T	F	S	S
23	24	25	26	27	28	1
2	3	4	5	6	7	8
9	10	11	12	13	14	15
16	17 St Patrick's Day	18	19	20	21	22
23	24	25	26	27	28	29
30	31	1	2	3	4	5



Glider recovery © Anthony English

**April 20
26**

Glider Network

The glider fleet consists of three 1,000m rated Teledyne Webb Slocum G3 gliders. The gliders can operate autonomously for up to 90 days collecting oceanographic data.


Gliders are available for use by the research community for oceanographic surveys, with various sensor configurations possible to support different scientific missions.

To discuss how the glider network can support your research, please contact infrastructures@marine.ie | www.marine.ie

May

Photo © Darryl Ewing

M	T	W	T	F	S	S
27	28	29	30	1	2	3
4	5	6	7	8	9	10
11	12	13	14	15	16	17
18	19	20	21	22	23	24
25	26	27	28	29	30	31



M	T	W	T	F	S	S
30	31	1	2	3	4	5
6	7	8	9	10	11	12
Easter Monday						
13	14	15	16	17	18	19
20	21	22	23	24	25	26
27	28	29	30	1	2	3



RV Celtic Explorer at Rossaveal with M6 on deck © Eoin Faherty

May 2026

Research Vessels

Ireland's two state-owned multi-purpose research vessels are the **RV Celtic Explorer** and the **RV Tom Crean**. The vessels facilitate both national and international marine research and exploration.


The vessels are designed for fisheries acoustic research, oceanographic, hydrographic and geological investigations as well as buoy and mooring deployments and remotely operated vehicle operations.

Applications from researchers for funded ship-time on the **RV Celtic Explorer**, **RV Tom Crean**, **RV Dulra na Mara**, and the **ROV Holland I** can be found on the Marine Institute website.

To discuss how the research vessels can support your research, please contact rv@marine.ie | www.marine.ie

June
Photo © Geoffrey Wood

M	T	W	T	F	S	S
1	2	3	4	5	6	7
8	9	10	11	12	13	14
15	16	17	18	19	20	21
22	23	24	25	26	27	28
29	30	1	2	3	4	5



M	T	W	T	F	S	S
27	28	29	30	1	2	3
4 <small>Public Holiday</small>	5	6	7	8	9	10
11	12	13	14	15	16	17
18	19	20	21	22	23	24
25	26	27	28	29	30	31



The M6 Data Buoy © Christine Loughlin

June **20**
26

Irish Marine Data Buoy Observation Network

Irish Marine Data Buoy Observation Network is a network of five offshore data buoys transmitting hourly and freely available readings of essential meteorological and sea state information to forecasters, mariners, and the general public.

The data buoys are available to host additional sensors to support specific scientific needs for the oceanographic and meteorological research community.

The network is managed and operated by the Marine Institute in collaboration with Met Éireann, on behalf of the Department of Agriculture, Food and the Marine (DAFM).

To discuss how the data buoy network can support your research, please contact infrastructures@marine.ie | www.marine.ie

July

Photo © Christine Loughlin

M	T	W	T	F	S	S
29	30	1	2	3	4	5
6	7	8	9	10	11	12
13	14	15	16	17	18	19
20	21	22	23	24	25	26
27	28	29	30	31	1	2



M	T	W	T	F	S	S
1 <small>Public Holiday</small>	2	3	4	5	6	7
8	9	10	11	12	13	14
15	16	17	18	19	20	21
22	23	24	25	26	27	28
29	30	1	2	3	4	5



Sentinel Site at Lehanagh Pool © Eoghan Daly

July **20**
26

Sentinel Sites

Three moored data buoys are deployed in the west of Ireland as sentinel sites for long-term environmental monitoring. The buoys are equipped with a suite of sensors to examine changes in plankton ecology, nutrient, dissolved oxygen, carbon inputs and physical oceanographic conditions to underpin the evidence base for marine climate policy.

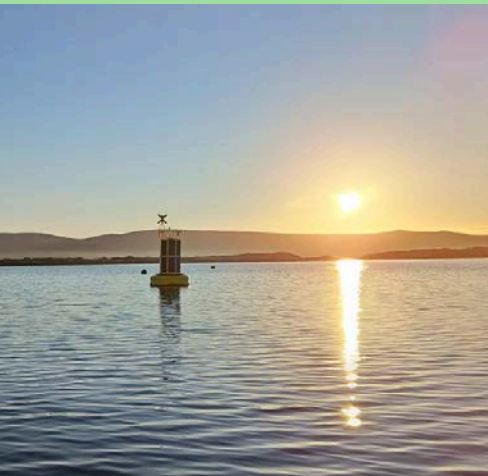
The sites will ensure that marine climate data are available to help fulfil national and European climate policies. It will improve marine knowledge about the impacts of climate change and will support decision making by building capacity.

To discuss how the sentinel sites can support your research, please contact infrastructures@marine.ie | www.marine.ie

August

Photo © Donal Kennedy

M	T	W	T	F	S	S
27	28	29	30	31	1	2
3	4	5	6	7	8	9
10	11	12	13	14	15	16
17	18	19	20	21	22	23
24	25	26	27	28	29	30
31	1	2	3	4	5	6



M	T	W	T	F	S	S
29	30	1	2	3	4	5
6	7	8	9	10	11	12
13	14	15	16	17	18	19
20	21	22	23	24	25	26
27	28	29	30	31	1	2



An Roinn Talmhaíochta,
Bia agus Mara
Department of Agriculture,
Food and the Marine



Foras na Mara
Marine Institute



Second camera frame deployment at SmartBay © Christine Loughlin

August

20 26

SmartBay Observatory

The SmartBay Observatory in Galway Bay is Ireland's only underwater cabled observatory. The observatory transmits real time data from a suite of sensors monitoring the underwater environment. Live data from the observatory can be accessed at www.smartbay.ie

The observatory is available to researchers to host additional scientific instruments, trial and validate new technologies, devices or sensors.

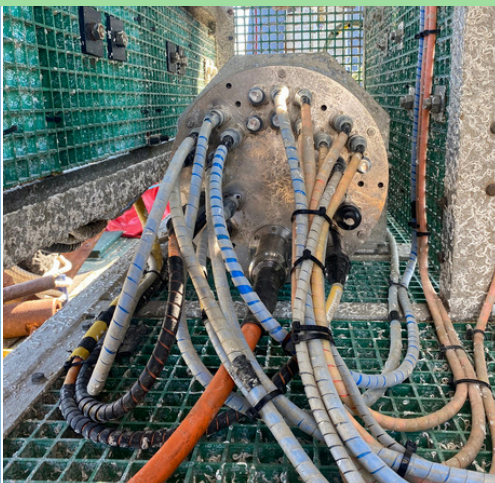
The SmartBay Observatory is Ireland's contribution to EMSO ERIC and supports the JERICO-RI coastal observation infrastructure.

To discuss how the SmartBay Observatory can support your research, please contact infrastructures@marine.ie | www.marine.ie

September

Photo © Christine Loughlin

M	T	W	T	F	S	S
31	1	2	3	4	5	6
7	8	9	10	11	12	13
14	15	16	17	18	19	20
21	22	23	24	25	26	27
28	29	30	1	2	3	4



M	T	W	T	F	S	S
27	28	29	30	31	1	2
3 Public Holiday	4	5	6	7	8	9
10	11	12	13	14	15	16
17	18	19	20	21	22	23
24	25	26	27	28	29	30
31	1	2	3	4	5	6



September 20
26

Argo Ireland

Argo is a global array of over 4,000 autonomous drifting floats taking measurements of the upper 2,000m of the global ocean. Data is transmitted every 10 days via satellite to data centers from where it is made freely available through www.euro-argo.eu

Ireland deploys Argo floats at key locations annually and researchers are welcome to discuss float deployment locations that may benefit specific research projects. Argo Ireland is Ireland's contribution to Euro-Argo ERIC.

To discuss how the Argo floats can support your research, please contact infrastructures@marine.ie | www.marine.ie

October

Photo © Caroline Cusack

M	T	W	T	F	S	S
28	29	30	1	2	3	4
5	6	7	8	9	10	11
12	13	14	15	16	17	18
19	20	21	22	23	24	25
26	27	28	29	30	31	1



M	T	W	T	F	S	S
31	1	2	3	4	5	6
7	8	9	10	11	12	13
14	15	16	17	18	19	20
21	22	23	24	25	26	27
28	29	30	1	2	3	4





October 20
26

Irish Wave Buoy Network

Wave buoys provide high resolution real-time data on wave conditions along Ireland's west coast. Three wave buoys are permanently deployed in support of marine renewable energy research.

Wave buoys are available to the research community for specific projects, along with technical support for marine operations. The network is managed and operated by the Marine Institute in collaboration with SEAI, and supports the JERICO-RI coastal observation infrastructure.

To discuss how the wave buoys can support your research, please contact infrastructures@marine.ie | www.marine.ie

November

Photo © Lydia Auchincloss

M	T	W	T	F	S	S
26	27	28	29	30	31	1
2	3	4	5	6	7	8
9	10	11	12	13	14	15
16	17	18	19	20	21	22
23	24	25	26	27	28	29
30	1	2	3	4	5	6



M	T	W	T	F	S	S
28	29	30	1	2	3	4
5	6	7	8	9	10	11
12	13	14	15	16	17	18
19	20	21	22	23	24	25
26 Public Holiday	27	28	29	30	31	1



From the eye of the M6 Data Buoy © Marine Institute

**November 20
26**

Deep Sea Moorings

A number of deep sea moorings and seabed landers are deployed in the Northeast Atlantic Ocean providing valuable data on ocean characteristics and advancing a better understanding of water masses in the Northeast Atlantic.

The moorings are available for use by the research community and can accommodate a variety of sensors and instruments to suit specific deep sea research needs at depths up to 3500m.

The South Rockall Trough Deep Water Mooring is a pilot EMSO ERIC node.

To discuss how the deep sea moorings can support your research, please contact infrastructures@marine.ie | www.marine.ie

M	T	W	T	F	S	S
26	27	28	29	30	31	1
2	3	4	5	6	7	8
9	10	11	12	13	14	15
16	17	18	19	20	21	22
23	24	25	26	27	28	29
30	1	2	3	4	5	6

December

Photo © Christine Loughlin

M	T	W	T	F	S	S
30	1	2	3	4	5	6
7	8	9	10	11	12	13
14	15	16	17	18	19	20
21	22	23	24	25	26	27
28	29	30	31	1	2	3





Christmas on the RV Dulra na Mara © Christine Loughlin

**December 20
26**

Digital Ocean

Enabling digitalisation of Ireland’s marine environment with Ocean Digital Twins. Ireland's Digital Ocean connects data from a wide range of organisations with advanced digital services to provide comprehensive data and information on Ireland's coasts and seas, supporting ocean understanding and decision making.


Real-time data from all relevant marine research infrastructures can be freely accessed and viewed on www.digitalocean.ie

To discuss how Digital Ocean data can support your research please contact infrastructures@marine.ie | www.marine.ie

January

Photo © Marine Institute

M	T	W	T	F	S	S
28	29	30	31	1	2	3
4	5	6	7	8	9	10
11	12	13	14	15	16	17
18	19	20	21	22	23	24
25	26	27	28	29	30	31



M	T	W	T	F	S	S
30	1	2	3	4	5	6
7	8	9	10	11	12	13
14	15	16	17	18	19	20
21	22	23	24	25	26	27
				Christmas Day	St. Stephen's Day	
28	29	30	31	1	2	3



EU Consortia and Collaborations

Sunrise from the RV Celtic Explorer © Declan Horan

European Multidisciplinary Seafloor and water column Observatory (EMSO) ERIC

Aims to explore the oceans, to gain a better understanding of phenomena happening within and below them, and to explain the critical role that these phenomena play in the broader Earth systems.

www.emso.eu

Euro-Argo ERIC

The European contribution to the International Argo programme sustaining ¼ of the global array, enhancing coverage in the EU regional seas, implementing the new phase of Argo with biogeochemistry floats, greater depths and latitudes, and providing quality controlled data and access to datasets.

www.euro-argo.eu

Joint European Research Infrastructure of Coastal Observatories (JERICO-RI)

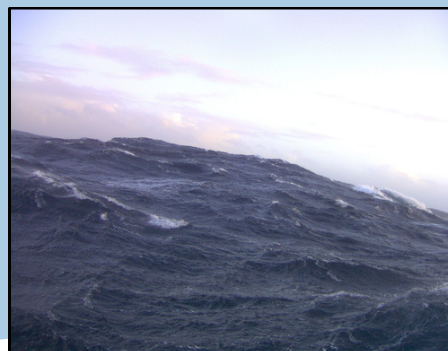
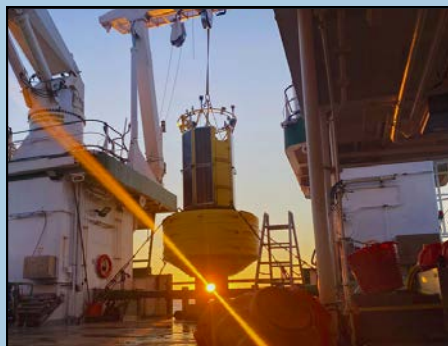
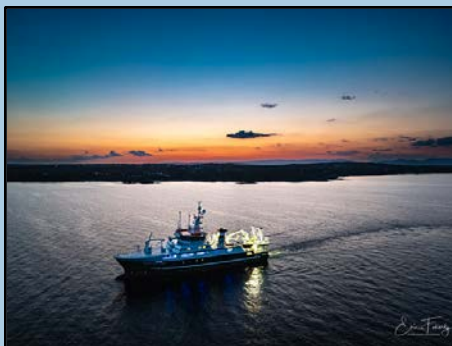
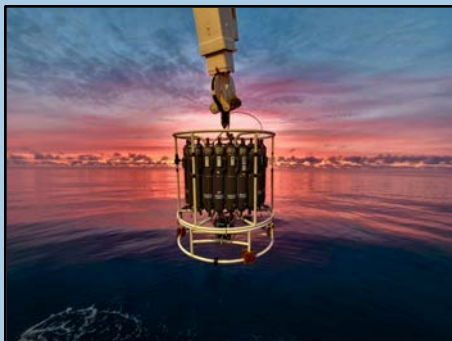
Strengthening a European network of coastal observatories and providing a sound operational service for the delivery of high quality environmental data and information products related to the marine environment in European coastal seas.

www.jerico-ri.eu



Year Ahead

Sunset at M4 Data Buoy © Yvonne Wiese



Acknowledgements: We would like to thank all the contributors for sharing their photos of research infrastructures in-situ, depicting the work and commitment it takes to maintain these hard to reach platforms.



This calendar was printed on carbon balanced paper contributing to Marine Institute's commitment to reducing carbon emissions.